

# DOUBLE-WIDE COMMAND CENTER



## Advantages

- Clean, modern, inviting.
- Lowest average age in the industry.
- Detailed maintenance programs.
- 24/7 on-call service and support.
- Custom spaces & accommodation for specific projects.

## Features

Two individual 12' x 61' trailers made up of a dry side and a wet side that combines to make a 28' x 62' trailer.

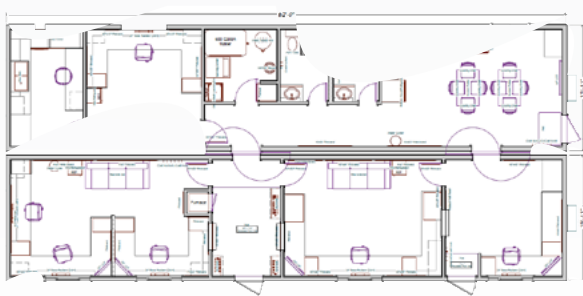
## Dry side

- Large main entrance
- Large office area on the right and left side of entrance with ample storage
- TVs and satellite
- Left side has further office area with entrance door that can be utilized as an HSE office with storage cabinets

## Wet side

- Equipped with large kitchen and lounge area
- Full size gas range and stove, fridge and freezer
- 2 washrooms
- Laundry center
- Furnished office
- Geologist lab workstations complete with stainless steel sink and fume hood

## Floor plan



**SPEAK WITH AN EXPERT TO FIND OUT MORE:**  
1.877.347.1628 | [apexsiterentals.com](http://apexsiterentals.com)



INNOVATION | ENVIRONMENT | SAFETY | SERVICE